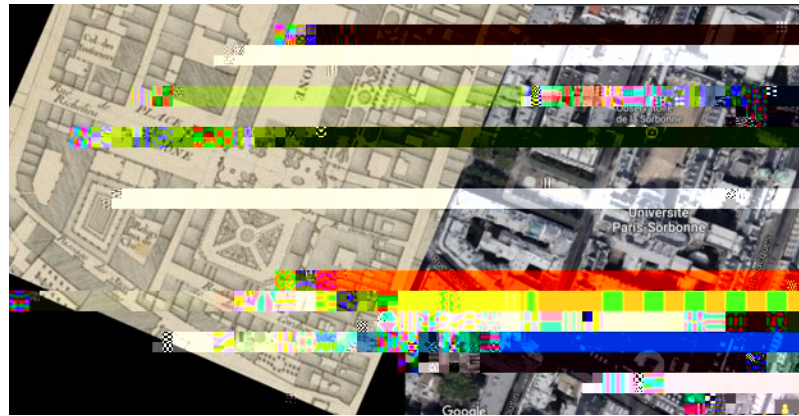


GSEM 605. Graduate Seminar: Urban Morphologies through Time: built landscapes and their representation.



Subject and Approach

'Footprint-cadasters'



[Fig. 5. Paris, Sorbonne area, from Delagrive, 1754 and Google Earth, 2016]

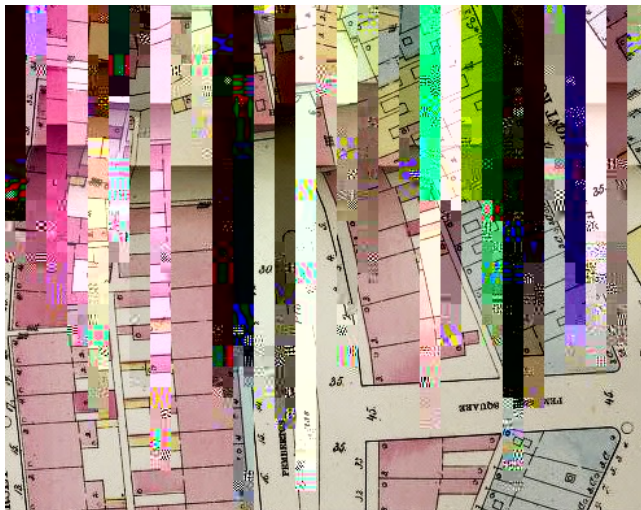
catasto napoleoniche

plan parcellaire

kadasterkaart

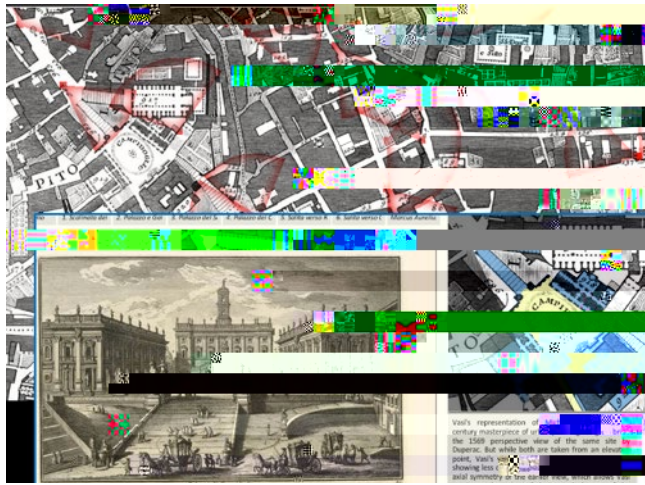
katasterplan

plano parcelario



[Fig. 6. Boston, from Sanborn atlas, 1867]

a



Van's representation of
century masterpiece of
the 18th perspective view of the same one
Daguer. But while both are taken from an elevated
point, Van's is
showing less C
total symmetry or the est



[Fig. 12. Rome, part of the Corso, east side, in elevation from *Prospetto Geometrico della fabbriche...*, 1835, and from the *Catasto Urbano*, 1824]

Common Streetscapes

Class Activities, Exercises, and Assignments



[Fig. 17

, all of which are available at Bascom.
